



OPEN ACCESS INTERNATIONAL JOURNAL OF SCIENCE & ENGINEERING

COMPARATIVE PHYTOCHEMICAL INVESTIGATIONS FROM AERIAL PARTS OF *Artemisia pallens* Wall. USING GC-MS ANALYSIS

Yatoo Ghulam Mohiuddin^{1*}, Varsha Nitin Nathar¹, N.A. Wagay², Nikhil Babruwahan Gaikwad³

Plant Tissue Culture Laboratory, Department of Botany, S. G. B. Amravati University, Amravati- 444602 (MS) India¹

Botany Research Laboratory, Vidya Bharati Mahavidyalya, Amravati- 444602 (MS) India.²

Department of Botany, Shivaji University, Kolhapur- 416 004 (MS) India.³

yatoobotany@gmail.com¹

Abstract: The present study was carried out to find the chemical constituents from aerial parts of medicinal important plant *Artemisia pallens*. The Gas Chromatography-Mass Spectrometric technique was used to determine the presence of various chemical constituents. The present study revealed that the aerial parts of *Artemisia pallens* accumulate a considerable amount of monoterpenes, sesquiterpenes and fatty acid derivatives which are mostly constituents of essential oils. Three solvents viz. Methanol, Petroleum ether and Dichloromethane were used for extraction. The results showed the presence of 16 compounds in the Methanolic extract, 13 compounds in the Petroleum ether extract and 17 compounds in the Dichloromethane extract.

Keywords: *Artemisia pallens*, GC-MS, Phytochemical, Secondary metabolites.

I INTRODUCTION

Traditional medicine is an important source of potentially useful compounds for the development of chemotherapeutic agents [1]. A wide range of medicinal plant parts is used for extract as raw drugs and they possess varied medicinal properties [2].

Artemisia pallens also known as Davana, is an aromatic delicate, erect, branched annual herb about 60 cm in height. It is abundantly found in humid habitats in the plains all over India. It is native to the southern parts of India, especially in the states of Karnataka, Tamil Nadu, Andhra Pradesh and Maharashtra. It is ethnomedicinally used in Iraq and Indian tribal medicine for the treatment of Diabetes mellitus, healing of wounds, modulating immune system, antihelmintic, antimicrobial, stimulant and as a tonic [3]. The volatile oil has been reported as antispasmodic, antifungal, antibacterial and also as stimulant [4]. Essential oil of *Artemisia pallens* is used as antiseptic, disinfectant and commercially important due to its fragrance [5]. *Artemisia pallens* also possesses antibacterial activity [6].

Gas Chromatography Mass Spectroscopy is a very compatible technique used for the identification and quantification of chemical compounds present in an extract.

The unknown organic compounds in a complex mixture can be determined by interpretation and also by matching the spectra with reference spectra [7]. The use of *Artemisia pallens* has been reported in ancient books like Ayurveda etc and its modern applications are receiving wide spread attention day by day. Hence, the aerial parts of *Artemisia pallens* were investigated in the present study to determine the possible chemical components by using technique GC-MS.

II MATERIALS AND METHODS

Collection of plant material:

Artemisia pallens was collected from village-Brahmanwada Chandurbazar, District- Amravati Maharashtra, the village is situated towards 21°19'0.77"N and 77°44'23.36"E at an elevation of 402 m. *Artemisia pallens* was identified by Botanical Survey of India (BSI), Western Regional Centre, Koregaon Road Pune (411001). Voucher specimens as voucher specimen number GMYAP2 (*Artemisia pallens*) was deposited in the BSI.

Powder Preparation

The fresh aerial parts of *Artemisia pallens* were washed with tap water and shade dried at room temperature (28 ±2 °C). These dried parts were powdered by electric

blender and finally stored in zip lock plastic bags until further experimentation.

Preparation of the extract

Soxhletion method was used for preparing of extracts using three solvents viz. Methanol, Petroleum ether and Dichloromethane. 10 grams of sample powder was extracted in 180 ml of solvent using Soxhlet apparatus. The temperature was maintained at the boiling point for each solvent [8], [9]. The time required is 3-18 hours [10]. The filtered extracts were concentrated to 5ml using rotatory vacuum evaporator at 28 ±2 °C and then analyzed by GC - MS.

Gas Chromatography-Mass Spectrometric Analysis (GC-MS)

The GC-MS analysis was carried out at University Science Instrumentation Center (USIC), Shivaji University, Kohlapur, Maharashtra, India using gas chromatography – high resolution mass spectrophotometer. 2 µl of the prepared extracts was employed for GC-MS analysis. The GC-MS analysis was carried using Shimadzu Make QP-2010 with column of 60 meter length, with 0.25 mm internal diameter and 0.32 thickness. Carrier gas Helium was used at constant flow rate of 1ml/minute. Injector temperature was set at 50 °C while as the Oven temperature was programmed from 10 °C to 280 °C at 10 °C /minute to 200 °C then 10 °C/ 3 minutes to 250 °C ending with a 5 minutes isothermal at 280 °C. The sample was injected in split mode as 10:80.

Identification of compounds:

The chromatogram, retention times, peak area, fragmentation pattern, m/z values etc are obtained by GC-MS analysis [11]. The identification in GC-MS is primarily based on retention times and fragmentation pattern of compounds. Interpretation on mass spectrum was done by comparing results with the spectral data of known compounds present in spectral library (National Institute Standard and Technology - NIST). The information acquired through this was name of

the compound, molecular weight, molecular formula and relative quantity of compounds (peak area %). The structures of important metabolites were drawn with the help of softwares Marvin Sketch and Chembidrow.

III RESULTS AND DISCUSSION

The present study revealed that the aerial parts of *A. pallens* accumulate a considerable amount of constituents such as essential oils (monoterpenes and sesquiterpenes) and derivatives of fatty acids. In the present study 16 compounds were identified in the Methanolic extract (Figure 1, Table 1) and 13 compounds were identified in Petroleum ether extract (Figure 2, Table 2) while as 17 compounds were identified in Dichloromethane extract (Figure 3, Table 3). The obtained results will help in the phytochemical research of *A. pallens* for standardization of the herbal powdered drug and preventing possible adulteration. The identified compounds are of interest for further pharmacological studies too.

The molecular structure of some of the compounds are described in Figure 4. Some of the important identified compounds with their pharmacological importance are as 2(3H)-Furanone, 5-ethenyldihydro-5-methyl- has been reported by [12] in plant extracts and has been reported to show antimalarial activity [13]. 3-Butenoic acid, 2-oxo-4-phenyl- has been reported to show antifungal activity [14]. 4-Thujen-2.alpha.-yl acetate has been reported in the seed extract of *Piper nigrum* [15]; and also in volatile oils obtained from *Laurus nobilis* leaves [16]. Cinnamic acid, ethyl ester and its derivatives have been reported for anti-microbial, anti-fungal and nematicidal activities [17], [18], [19]. Longipinane, (E)- has been reported by [20], [21] and it possess anti-pedant and cytotoxic activity [22], [23]. Spathulenol has been reported as a component of essential oil by various authors and it possesses antibacterial, insect repellent activity [24]; immune modulatory activity [25].

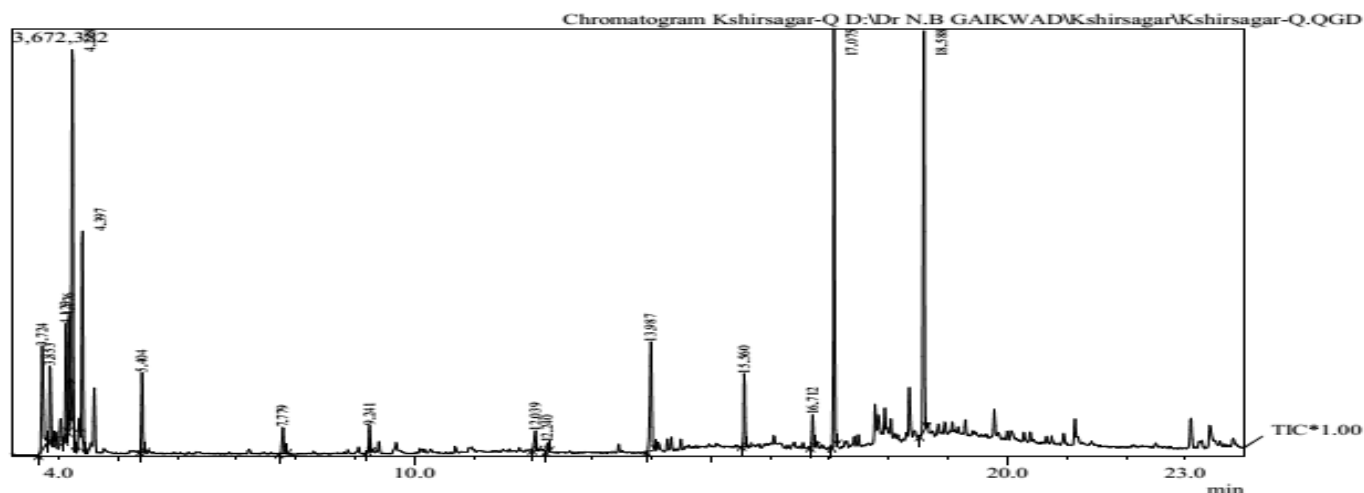


Figure 1: GC-MS chromatogram of Methanolic extract from aerial parts of *Artemisia pallens*.

Table 1: Identified compounds in Methanolic extract from aerial parts of *Artemisia pallens*.

Sr. No.	Retention Time	Name of compound	Area (%)	Molecular weight	Molecular formula
1	3.724	Nitrous Oxide	6.73	44	N ₂ O
2	3.853	Ethanol	3.46	46	C ₂ H ₆ O
3	4.123	Pentane, 2-methyl-	5.40	86	C ₆ H ₁₄
4	4.176	Hexane, 2,2,3-trimethyl-	4.88	128	C ₉ H ₂₀
5	4.228	Butane, 2,2,3-trimethyl-	15.55	100	C ₇ H ₁₆
6	4.397	Cyclopentane, methyl-	9.62	84	C ₆ H ₁₂
7	5.404	Toluene	3.87	92	C ₇ H ₈
8	7.779	2(5H)-Furanone, 5,5-dimethyl-	1.53	112	C ₆ H ₈ O ₂
9	9.241	3-Hepten-2-one, 4-methyl-	1.14	126	C ₈ H ₁₄ O
10	12.039	1,7-Heptanediol	1.14	132	C ₇ H ₁₆ O ₂
11	12.240	Lilac aldehyde	0.36	168	C ₁₀ H ₁₆ O ₂
12	13.987	Lilac alcohol C	6.82	170	C ₁₀ H ₁₈ O ₂
13	15.560	Cinnamic acid, ethyl ester	3.06	176	C ₁₁ H ₁₂ O ₂
14	16.712	+/-.-trans-Nerolidol	1.47	222	C ₁₅ H ₂₆ O
15	17.075	5-Hepten-3-one, 2-(5-ethenyltetrahydr+o-5-methyl-2-furanyl)-6-methyl-, [2S-[2.alpha.(R),5.alpha.]]-	16.67	236	C ₁₅ H ₂₄ O ₂
16	18.588	10-Methyl-8-tetradecen-1-ol acetate	18.23	268	C ₁₇ H ₃₂ O ₂

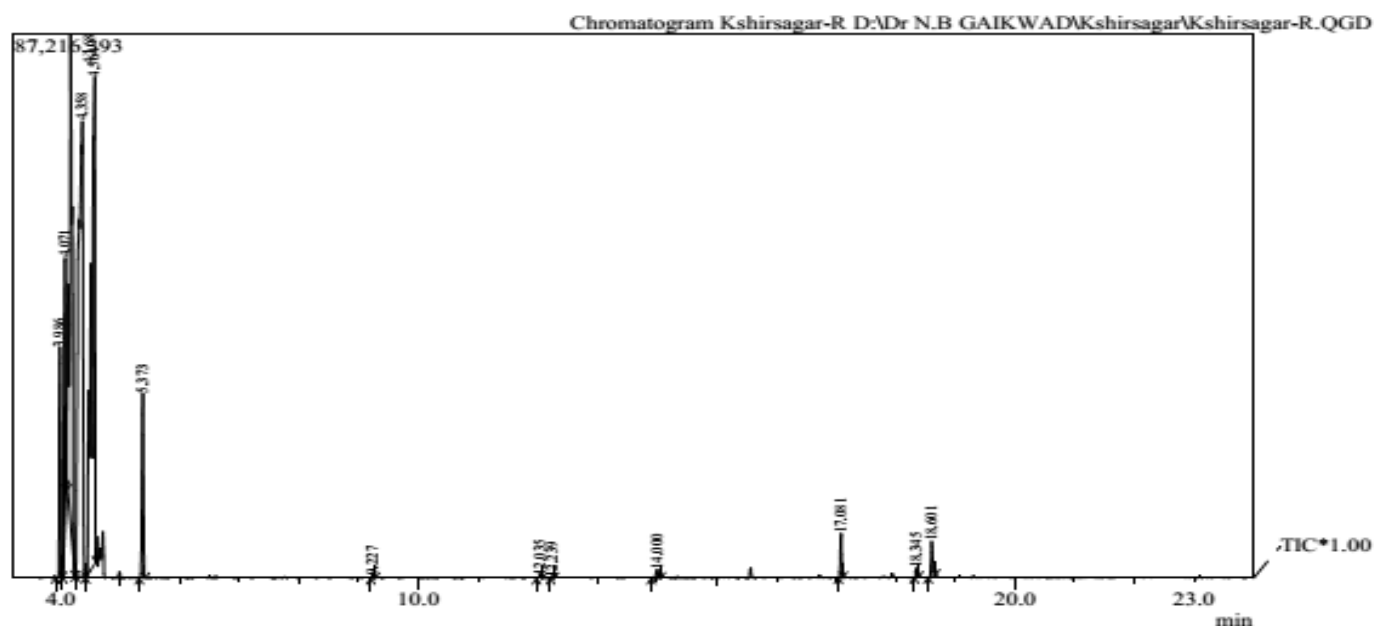


Figure 2: GC-MS chromatogram of Petroleum ether extract from aerial parts of *Artemisia pallens*.

Table 2: Identified compounds in Petroleum ether extract from aerial parts of *Artemisia pallens*.

Sr. No.	Retention Time	Name of compound	Area (%)	Molecular weight	Molecular formula
1	3.986	Dichloromethane	5.37	84	CH ₂ Cl ₂
2	4.071	Furan, tetrahydro-2-methyl-	6.99	86	C ₅ H ₁₀ O
3	4.168	Pentane, 2,3-dimethyl-	20.87	100	C ₇ H ₁₆
4	4.358	1-Octanol	32.20	130	C ₈ H ₁₈ O
5	4.564	1-Octanol	27.55	130	C ₈ H ₁₈ O
6	5.373	Toluene	4.48	92	C ₇ H ₈
7	9.227	2(3H)-Furanone, 5-ethenyldihydro-5-methyl-	0.08	126	C ₇ H ₁₀ O ₂
8	12.035	1,7-Heptanediol	0.09	132	C ₇ H ₁₆ O ₂
9	12.239	Lilac aldehyde D	0.02	168	C ₁₀ H ₁₆ O ₂
10	14.000	Lilac alcohol C	0.30	170	C ₁₀ H ₁₈ O ₂
11	17.081	Cyclohexane, 1,4-dimethyl-2-(2-methylpropyl)-, (1.alpha.,2.beta.,5.alpha.)-	0.93	168	C ₁₂ H ₂₄
12	18.345	5-Hepten-3-one, 2-(5-ethenyltetrahydro-5-methyl-2-furanyl)-6-methyl-, [2S-[2.alpha.5.alpha.]]-	0.20	236	C ₁₅ H ₂₄ O ₂
13	18.601	Cyclopropane, 1-(1-hydroxy-1-heptyl)-2-methylene-3-pentyl-	0.93	238	C ₁₆ H ₃₀ O

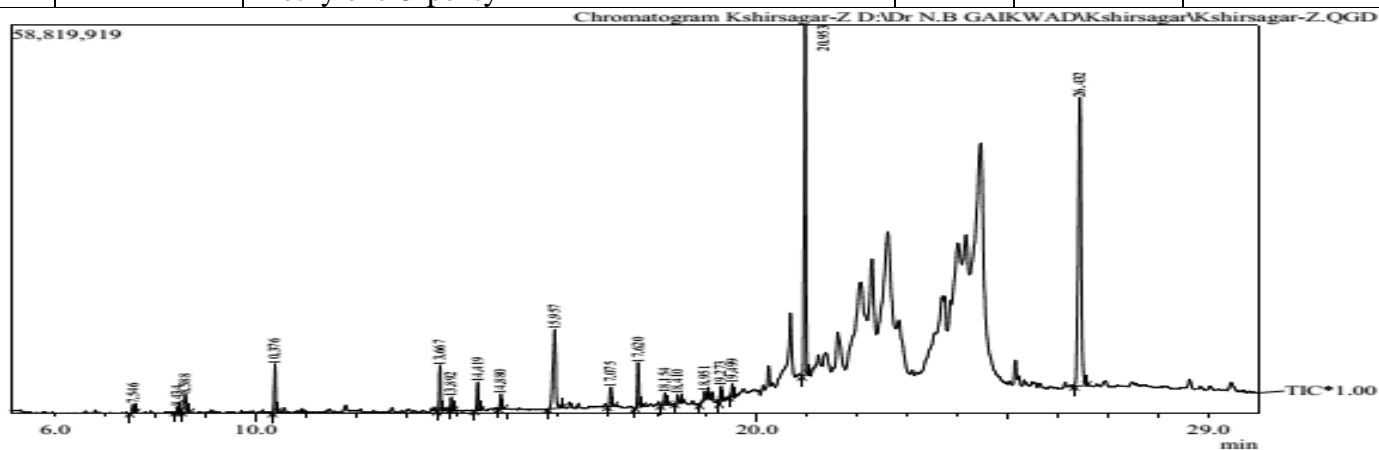
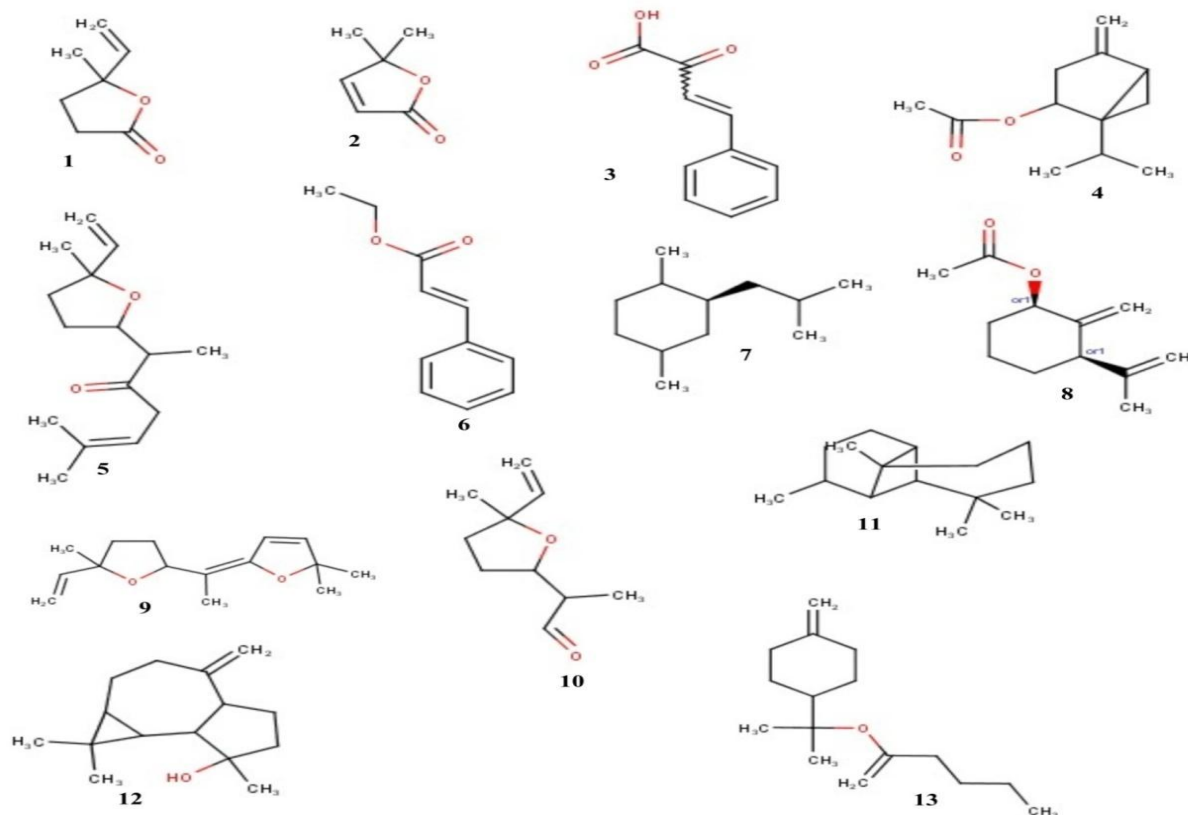


Figure 3: GC-MS chromatogram of Dichloromethane extract from aerial parts of *Artemisia pallens*.

Table 3: Identified compounds in Dichloromethane extract from aerial parts of *Artemisia absinthium*.

Sr. No.	Retention Time	Name of compound	Area (%)	Molecular weight	Molecular formula
1	7.546	Cyclohexene,3-(1-methylpropyl)-	0.64	138	C ₁₀ H ₁₈
2	8.434	1,3-Hexadiene, 3-ethyl-2,5-dimethyl-	0.28	138	C ₁₀ H ₁₈
3	8.588	2(5H)-Furanone, 5,5-dimethyl-	2.05	112	C ₆ H ₈ O ₂
4	10.376	3,5-Octadien-2-ol	3.26	126	C ₈ H ₁₄ O
5	13.667	1,7-Heptanediol	3.06	132	C ₇ H ₁₆ O ₂
6	13.892	Lilac aldehyde D	0.76	168	C ₁₀ H ₁₆ O ₂
7	14.419	Cyclohexanol, 2-methylene-3-(1-methylethenyl)-, acetate, cis-	1.88	194	C ₁₂ H ₁₈ O ₂
8	14.880	4-Thujen-2.alpha.-yl acetate	0.95	194	C ₁₂ H ₁₈ O ₂

9	15.957	Lilac aldehyde	10.03	168	C ₁₀ H ₁₆ O ₂
10	17.075	Lilac alcohol C	1.82	170	C ₁₀ H ₁₈ O ₂
11	17.620	3-Butenoic acid, 2-oxo-4-phenyl-	3.27	176	C ₁₀ H ₈ O ₃
12	18.154	Longipinane, (E)-	0.91	206	C ₁₅ H ₂₆
13	18.410	Davana ether	0.74	234	C ₁₅ H ₂₂ O ₂
14	18.951	trans-.beta.-Terpinyl pentanoate	0.86	238	C ₁₅ H ₂₆ O ₂
15	19.273	5-Hepten-3-one, 2-(5-ethenyltetrahydro-5-methyl-2-furanyl)-6-methyl-, [2S-[2.alpha.(R).5.alpha.]]-	1.07	236	C ₁₅ H ₂₄ O ₂
16	19.499	Spathulenol	1.03	220	C ₁₅ H ₂₄ O
17	20.953	Cyclopropane, 1-(1-hydroxy-1-heptyl)-2-methylene-3-pentyl-	27.31	238	C ₁₆ H ₃₀ O



1. 2(3H)-Furanone, 5-ethenyldihydro-5-methyl-
2. 2(5H)-Furanone, 5,5-dimethyl-
3. 3-Butenoic acid, 2-oxo-4-phenyl-
4. 4-Thujen-2.alpha.-yl acetate
5. 5-Hepten-3-one, 2-(5-ethenyltetrahydro-5-methyl-2-furanyl)-6-methyl-, [2S-[2.alpha.5.alpha.]]-
6. Cinnamic acid, ethyl ester
7. Cyclohexane, 1,4-dimethyl-2-(2-methylpropyl)-, (1.alpha.,2.beta.,5.alpha.)-
8. Cyclohexanol, 2-methylene-3-(1-methylethenyl)-, acetate, cis-
9. Davana ether
10. Lilac aldehyde
11. Longipinane, (E)-
12. Spathulenol
13. trans-.beta.-Terpinyl pentanoate

Figure 4: Molecular structures of identified compounds from aerial parts of *A. pallens*.

IV CONCLUSION

The aim of the study was to analyze the chemical components present in the aerial parts of *A. pallens* widely grown in Maharashtra (India). The aerial parts of *A. pallens* contained higher amounts of secondary metabolites. Dichloromethane proved comparatively better solvent of extraction than Methanol and Petroleum ether. The various compounds isolated from aerial parts of *A. pallens* has shown various medicinal properties like antimalarial, antifungal activity, anti-microbial, anti-fungal, antibacterial, insect repellent activity etc. GC-MS analysis can open up new means for identification of natural drugs that can be employed for clinical trials which may generate successful results in future. Thus, this type of study may give information on nature of active principles present in the medicinal plants.

REFERENCE

- [1] Palombo EA, Semple SJ. Antibacterial activity of traditional Australian medicinal plants. *Journal of Ethno Pharmacol* (2001), 77: 151-157.
- [2] Uniyal SK, Singh KN, Jamwal P, Lal B. Traditional use of medicinal plants among the tribal communities of Chhota Bhangal, Western Himalayan. *Journal of Ethnobiol. Ethnomed.* (2006), 2: 1-14.
- [3] Drury RA; Wallington E. A.: "Carleton's histological technique". 5th ed. Oxford: Oxford University Press (1980).
- [4] Suresh J., Elango K, Dhanabal SP, Paramakrishnan N, Suresh B. A comparative pharmacognostical studies of *Artemisia* species found in Nilgiris biosphere. *Anc Sci Life.* (2007), 27(2): 7-13.
- [5] Misra LN, Amitabh C, Raghunath ST. Fragrant Components of oil from *Artemisia pallens*. *Phytochemistry.* (1991), 2: 549-552.
- [6] Ruikar AD, Gayatri SK, Vedavati GP, Nirmala RD. Antimicrobial Screening of Medicinal Plant- *Artemisia pallens*. *International Journal of Pharm Tech Research.* (2009), 4: 1164-1166.
- [7] Ronald HA. *Gas Chromatography Mass Spectroscopy: Handbook of Instrumental Techniques for Analytical Chemistry,* (1997), 609-611.
- [8] Tiwari P, Bimlesh K, Mandeep k, Gurpreet K, Harleen K. Phytochemical screening and Extraction: A Review. *Internationale Pharmaceutica Scientia.* (2011), 1 (1): 98-106.
- [9] Nikhal SB, Dambe PA, Ghongade, DB, Goupale DC. Hydroalcoholic extraction of *Mangifera indica* (leaves) by Soxhletion. *International Journal of Pharmaceutical Sciences.* (2010), 2(1): 30-32.
- [10] Zygmunt JB, Namiesnik J. Preparation of samples of plant material for chromatographic analysis. *J. Chromatogr. Sci.* (2003), 41: 109-116.
- [11] Wagay NA, Khan, NA, Rothe SP. Profiling of secondary metabolites and antimicrobial activity of *Crateva religiosa* G. Forst. Bark - A rare medicinal plant of Maharashtra India. *Int. J. Biosci.* (2017), 10 (5): 343-354. <http://dx.doi.org/10.12692/ijb/10.5.343-354>
- [12] Bashar S, Abdulraheem, Mustafa AA, Nasir AA. Effect of Three Medicinal Plants Extracts on the Growth of Some Yeasts. *Journal of Natural Sciences Research.* (2017), 7 (12): 34-48.
- [13] Hameed IH, Altameme HJ, Idan SA. *Artemisia annua*: Biochemical products analysis of methanolic aerial parts extract and anti-microbial capacity. *Research Journal of Pharmaceutical, Biological and Chemical Sciences.* (2016), 7(2): 1843-1868.
- [14] Jee YL, Jung YL, Surk SM, Byung KH. Isolation and Antifungal Activity of 4-Phenyl-3-Butenoic Acid from *Streptomyces koyangensis* Strain VK-A60. *Journal of Agricultural and Food Chemistry.* (2005), 53 (20): 7696-7700.
- [15] Zahira A, Thamilmani K, Mohamed RR. Phytochemical Screening and GC- MS Profiling of *Piper nigrum* L. *World Journal of Pharmaceutical Research.* (2016), 5 (5): 798-807.
- [16] Kivrak Ş, Tolga G, Ibrahim K. Assessment of Volatile Oil Composition, Phenolics and Antioxidant Activity of Bay (*Laurus nobilis*) Leaf and Usage in Cosmetic Applications. *Int. J. Sec. Metabolite.* (2017), 4 (2): 148-161
- [17] Kumar V, Sharma A, Thukral AK, Bhardwaj R. Phytochemical Profiling of Methanolic extracts of medicinal plants using GC-MS. *International Journal of Research and Development in Pharmacy and Life Sciences.* (2016), 5 (3): 2153-2158.
- [18] Kim, DS, Na H, Song JH, Kwack Y, Kim SK, Chun CH. Antimicrobial Activity of Thinned Strawberry Fruits at Different Maturation Stages. *Korean Journal of Horticultural Science and Technology.* (2012), 30: 769-775.
- [19] Bock CH, Shapiro-Ilan DI, Wedge DE, Cantrell CL. Identification of the Antifungal Compound, Trans-Cinnamic Acid, Produced by *Photographia luminescens*, a Potential Biopesticide against Pecan Scab. *Journal of Pest Science.* (2014) 87: 155-162.
- [20] Kavitha KR, Bopaiah AK, Kolar AB. Chemical Composition of the essential oil from the leaves of *Cipadessa baccifera* (ROTH.) MIQ. *IJPSR.* (2016), 7 (1): 392-396.
- [21] Om Prakash, Gondwal M, Pant AK. Essential oils composition and antioxidant activity of water extract

- from seeds and fruit pulp of *Skimmia anquetilia* N.P. Taylor & Airy Shaw. Indian Journal of Natural Products and Resources. (2011), 2 (4): 435-441.
- [22] Oyegbemi AA, Odetola AA. Hepato protective effects of ethanolic extract of *Cnidioscolus aconitifolius* on paracetamol-induced hepatic damage in rats. Pakistan Journal of Biological Science. (2010), 13: 164- 169.
- [23] Ranhotra GS, Gelroth JA, Leinen SD, Vinas MA, Lorenz K. Nutritional Profile in Some Edible Plants from Mexico. Journal of Food Composition and Analysis, (1998), 2: 298-304.
- [24] María JD, Jose MB, James RH, Isidro GC, Rosario H. Biological Activity of Natural Sesquiterpenoids containing a gem-Dimethylcyclopropane Unit. Electronic Supplementary Material (ESI) for Natural Product Reports. The Royal Society of Chemistry. (2015), 1-28.
- [25] Ziaei A, Mohammad R, Louwrance W, Christian P, Bernd S, Zahra A. Identification of spathulenol in *Salvia mirzayanii* and the immunomodulatory effects. Phytotherapy Research. (2011), 25(4): 557-562.